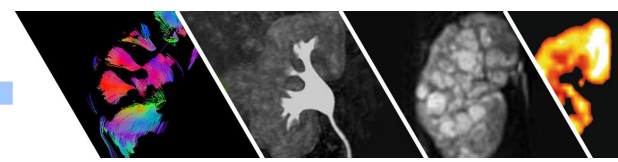


The **PARENCHIMA** project

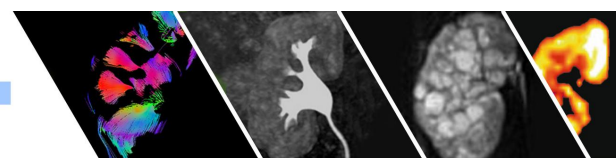
Magnetic Resonance Imaging Biomarkers
for Chronic Kidney Disease

Author

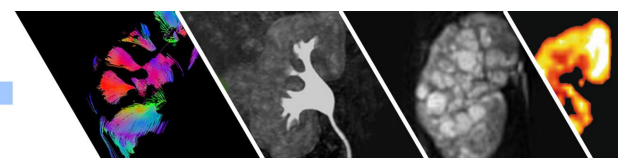
Introduction



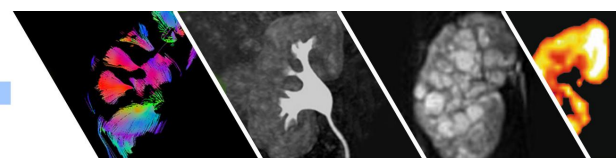
Aim



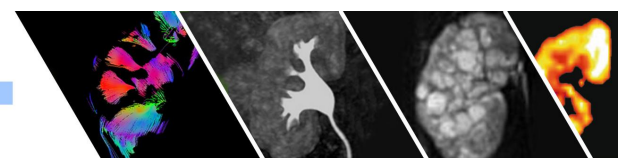
Methods

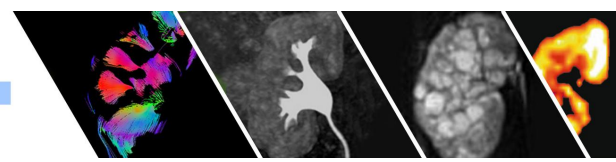


Results



Discussion





Acknowledgement

This presentation is based upon work from COST Action PARENCHIMA (CA16013), supported by COST (European Cooperation in Science and Technology).

COST (European Cooperation in Science and Technology) is a funding agency for research and innovation networks. Our Actions help connect research initiatives across Europe and enable scientists to grow their ideas by sharing them with their peers. This boosts their research, career and innovation. www.cost.eu